

# Fuel Tank/Two-way Valve

## Replacement

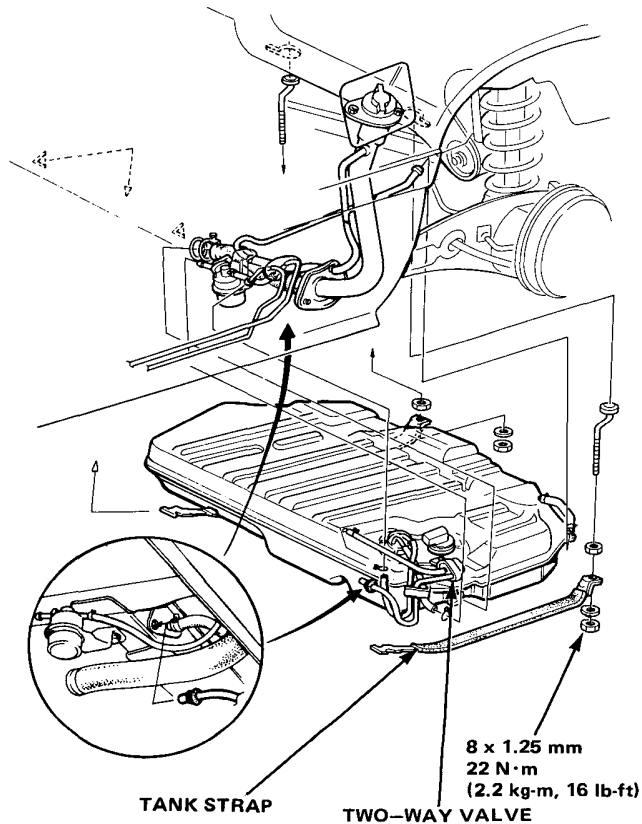
### WARNING

- Do not smoke while working on fuel system. Keep open flame away from work area.
- Block front wheels before jacking up rear of car.

1. Raise the rear of the car and place jackstands in the proper locations.
2. Remove the fuel filter cover. (Except for Coupe model)
3. Remove the drain bolt and drain the fuel into an approved container.
4. Disconnect the sending unit connectors.
5. Disconnect the hoses.

**CAUTION:** When disconnecting the hoses, slide back the clamps, then twist hoses as you pull, to avoid damaging them.

6. Place a jack, or other support, under the tank.
7. Remove the strap nuts and let the straps fall free.
8. Remove the fuel tank.
9. Install a new washer on the drain bolt, then install parts in the reverse order of removal.



# Fuel Gauge



## Testing

1. Raise the rear of the car and place jackstands in the proper locations.
2. Check that ignition switch is OFF.
3. Disconnect fuel sending unit connector to check fuel gauge continuity and movement.
4. Connect the yellow/white wire to the black wire using a jumper wire.
5. Turn ignition switch ON and watch the fuel gauge; turn the ignition OFF as soon as gauge needle stops moving. Needle should have moved to FULL mark.

**CAUTION:** Do not leave ignition ON for longer than 5 seconds or fuel gauge will be damaged.

- If gauge needle went to FULL, re-connect sending unit wires and go on to sending unit test on next page.
- If needle did not go to FULL, check fuse, wiring and connectors. If OK, replace gauge and re-test.

